



Where Georgia comes together.

www.perry-ga.gov

April 5, 2021

WORK SESSION AGENDA
PERRY EVENTS CENTER
1121 MACON ROAD, PERRY, GA 31069

5:00 PM

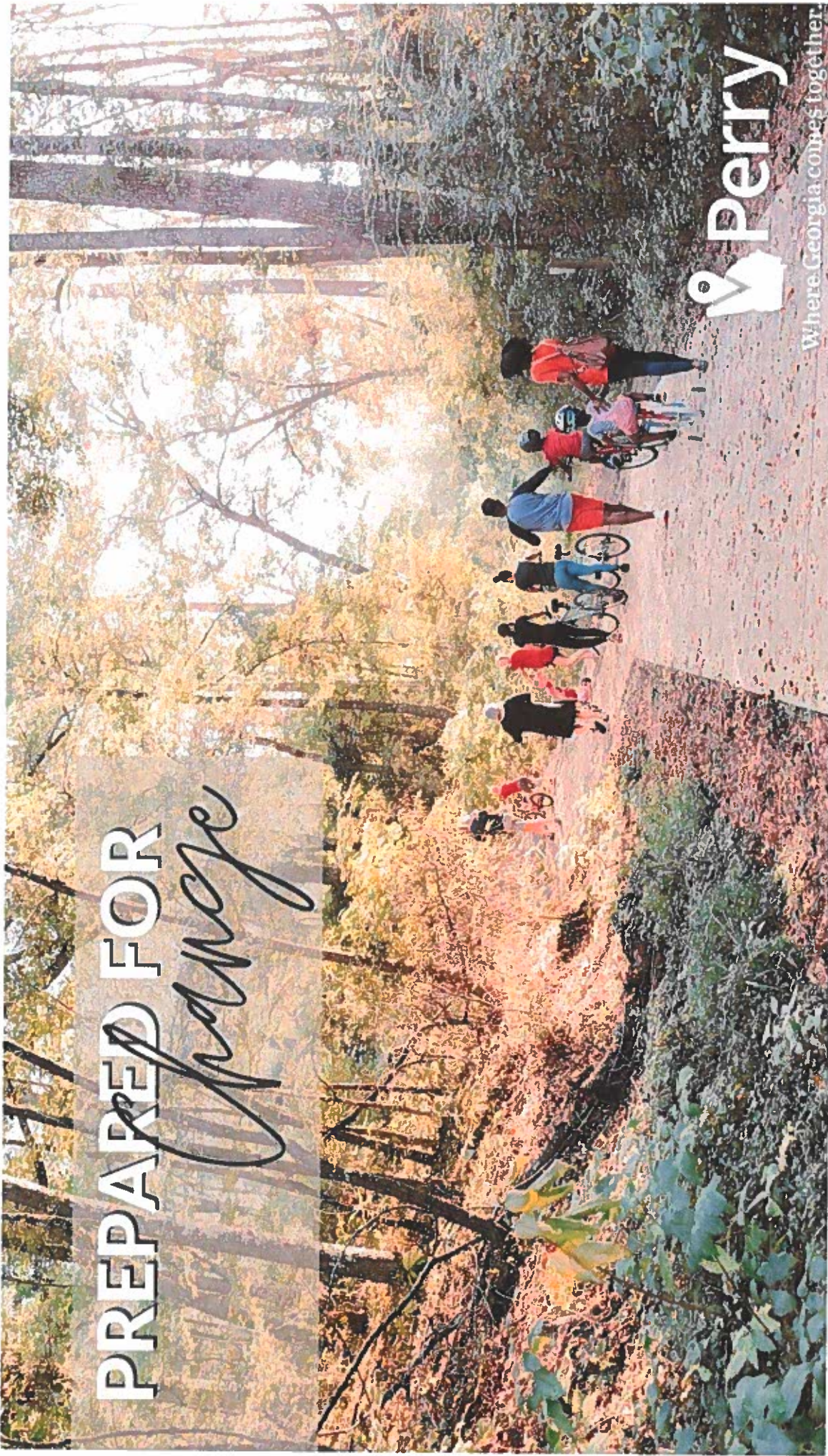
To join the meeting by Facebook: Use this URL - facebook.com/cityofperryga
This will allow you to view and hear the meeting.

1. Call to Order: Mayor Randall Walker, Presiding Officer.
2. Roll:
3. Items of Review/Discussion: Mayor Randall Walker
 - 3a. Office of the Mayor
 1. State of the City presentation – Mayor Walker.
 - 3b. Department of Public Works
 1. Recommendation for facilities security vendor – Ms. A. Fitzner.
 - 3c. Department of Leisure Services
 1. Proposal to install ice vending machines at destination parks – Mr. S. Swan.
 - 3d. Office of the City Manager
 1. Schedule a town hall meeting for citizen input for the next phase of Pine Needle Park – Mr. L. Gilmour.
 2. Neighborhood parks – Mr. L. Gilmour.
 3. Infrastructure assessment – Mr. R. Smith.
 - 3e. Perry Police Department
 1. Request for a fee waiver relative to the Trust Initiative Record Restriction event to be held on April 24 – Chief S. Lynn.
4. Council Member Items:
5. Department Head/Staff Items:

6. Adjourn.

In accordance with the Americans with Disabilities Act, accommodations are available for those who are hearing impaired and/or in need of a wheelchair. The Perry City Council Agenda and supporting material for each item is available on-line through the City's website at www.perry-ga.gov.

PREPARED FOR
change



Where Georgia comes together.

Answering Common Questions...



How and where is Perry's growth occurring?



How prepared is the City?



What's the plan for the future?



Population Growth

37.29%

increase in Perry's population from 2012-2020

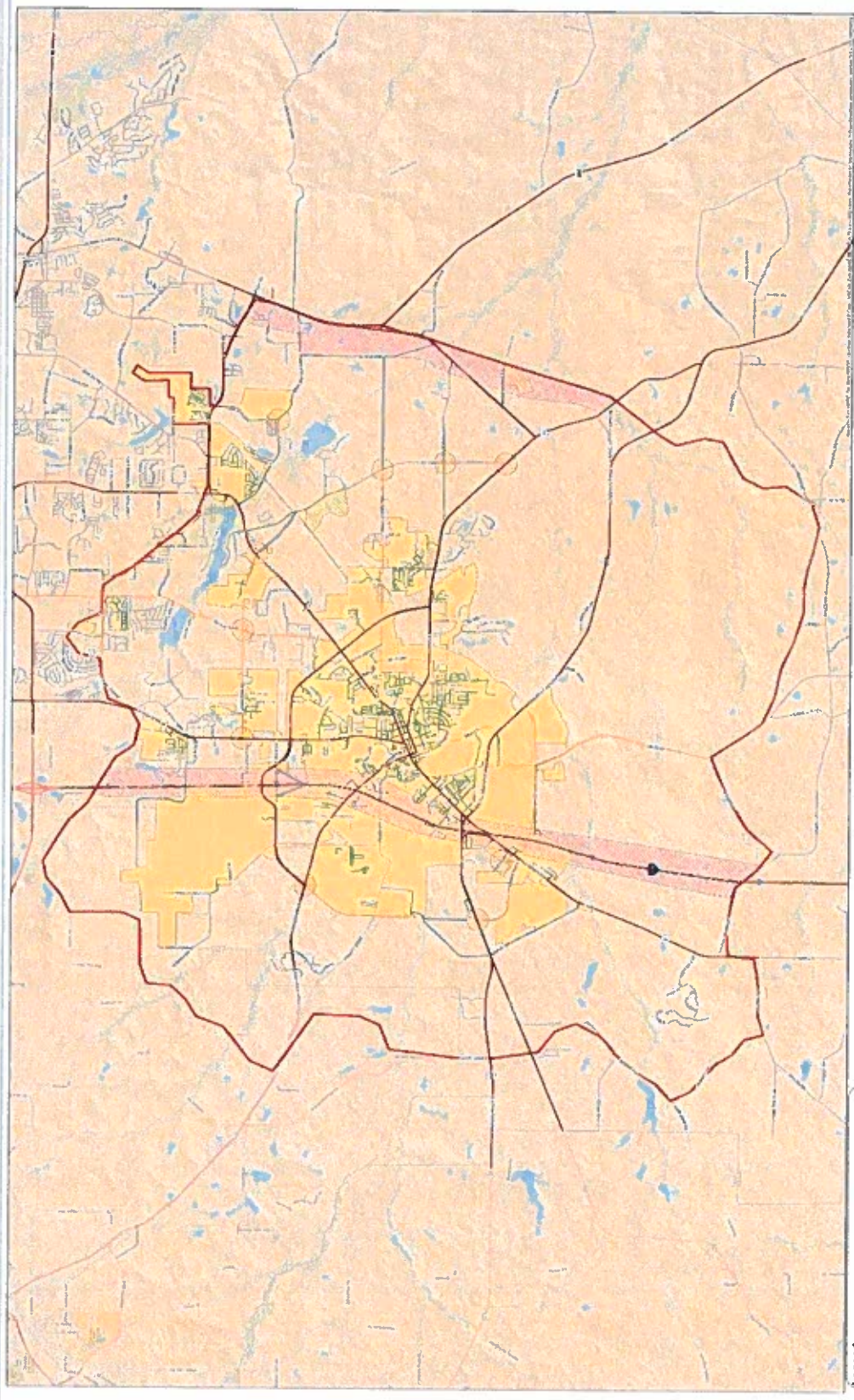


Single Family Detached House Permits

332%

increase in the permits issued from 2012-2020.





Perry Service Area
October 10, 2016



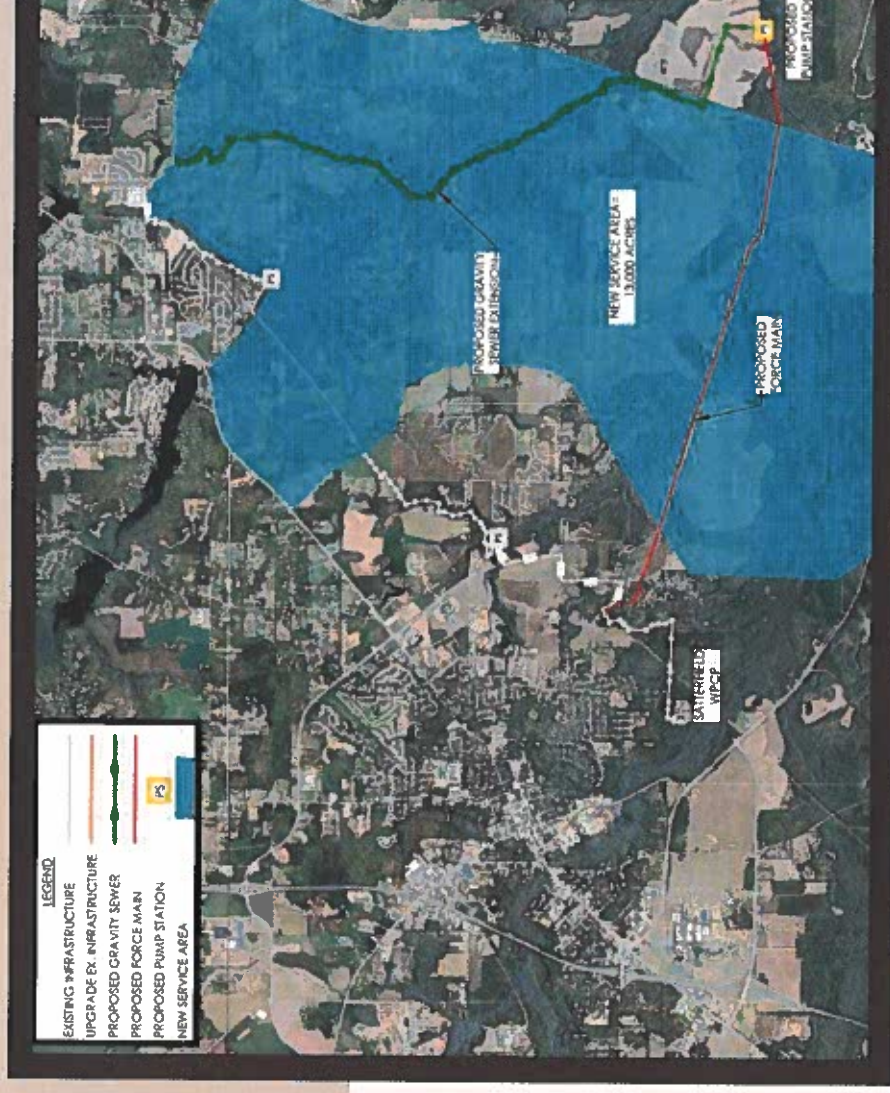
- Legend**
- Street/Extensions
 - Heavy-Commercial/Industrial
 - Major Parks
 - Perry Service Area
 - Commercial/Nodes
 - Municipal Boundaries

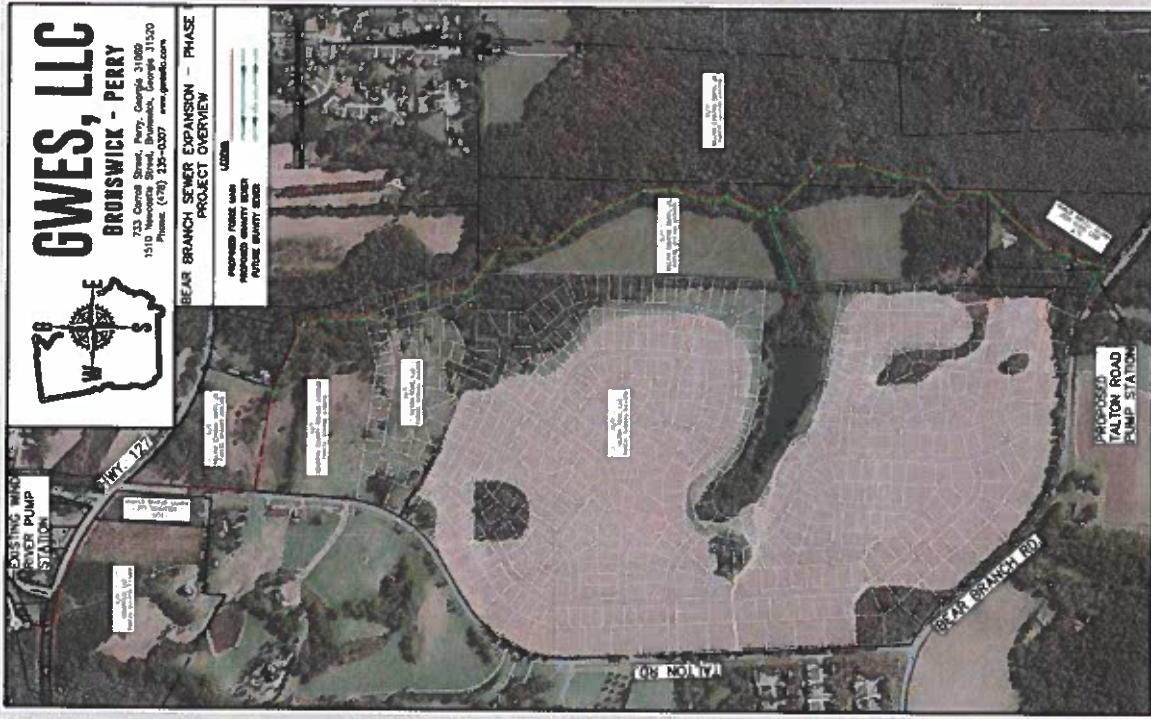
Expansion to the East

 ~ 20,600 residential lots could be developed

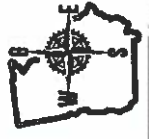
 ~1,900 acres already developed as subdivisions & industry

 ~8,600 acres available for new development





GWES, LLC
BRUNSWICK - PERRY
 733 Central Street, Perry, Georgia 31099
 1510 Newcombe Street, Brunswick, Georgia 31520
 Phone: (478) 235-0327 www.gwesllc.com



BEAR BRANCH SEWER EXPANSION - PHASE
PROJECT OVERVIEW

- LEGEND**
- PROPOSED FORCE MAIN
 - PROPOSED SANITARY SEWER
 - EXISTING GRAVITY SEWER

Tucker Road Water Treatment Facility

BACKGROUND

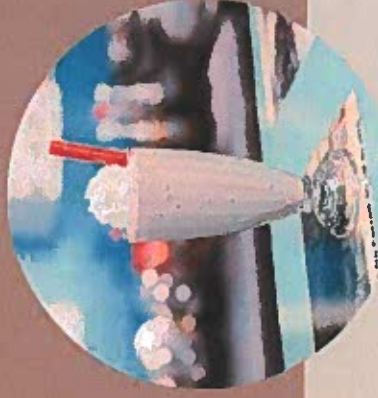
- State-of-the-art water treatment facility
- Needed to support the east Perry utility district growth
- Capacity estimated at 2 million gallons per day

MOVING FORWARD

Helps support multi-generational water security for the Perry community.



Quality of Life



PARKS

- Destination Playgrounds
- Passive Parks
- Neighborhood Pocket Parks
- Trails System
- Upcoming plans

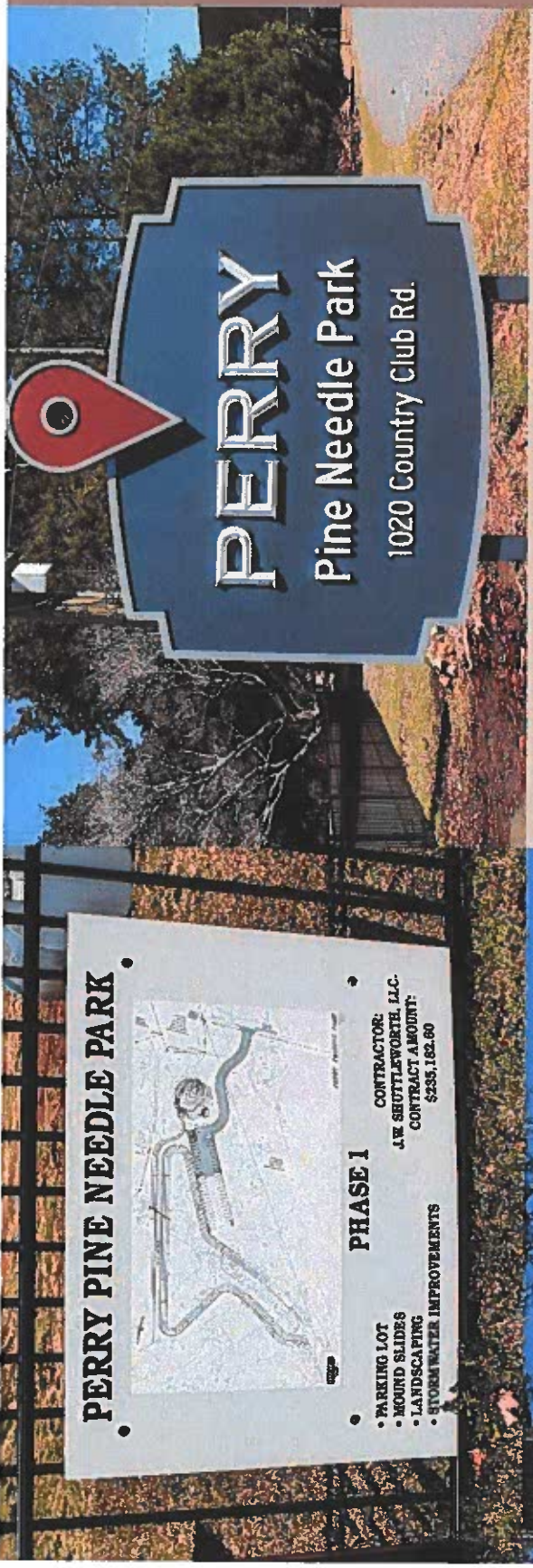
EVENTS

- International Festival
- Food Truck Friday
- Buzzard Drop

HISTORIC DOWNTOWN

- Shops
- Restaurants
- Development





PERRY PINE NEEDLE PARK



PHASE 1

- PARKING LOT
 - MOUND SLIDES
 - LANDSCAPING
 - STORM WATER IMPROVEMENTS
- CONTRACTOR:
J.W. SHUTTLEWORTH, LLC.
CONTRACT AMOUNT:
\$235,162.00

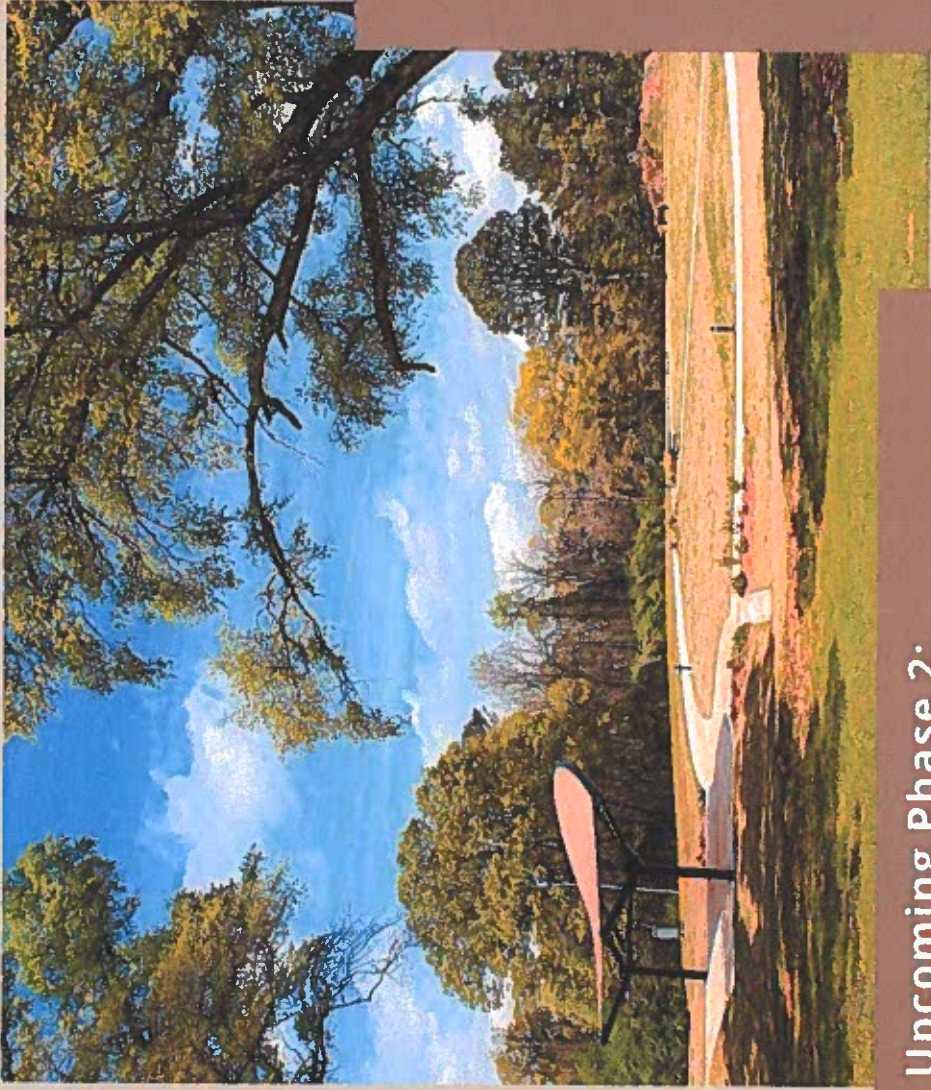


61.35 Acres



Construction underway:

- Stormwater improvements
- Paved parking lot
- Earth mound with slides



Heritage Oaks Park



20-acres



Oval amphitheatre lawn



Shaded sail stage area



Used for Perry Presents concert series and Workout in the Park series.



Upcoming Phase 2:

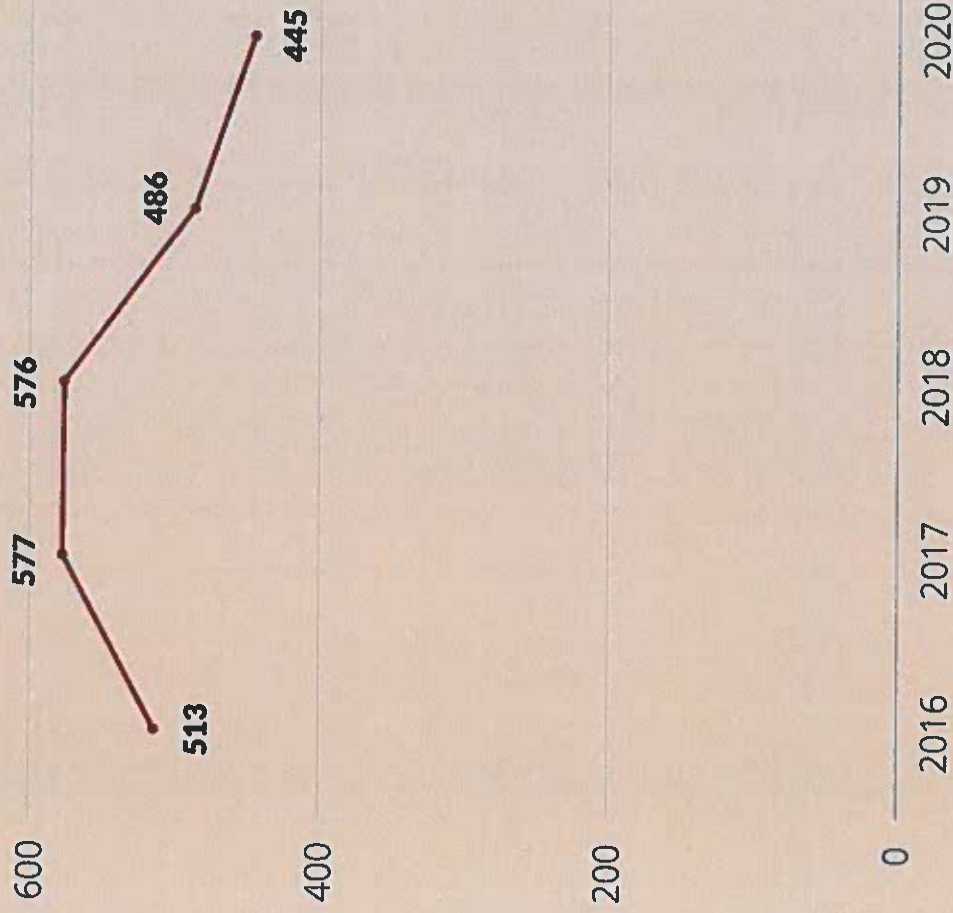
Walking trails, public art displays, restroom



Major Crime Rate 2016-2020

13%

decrease in major crimes
since 2016.



Award Winning City



PLANFIRST

Successful implementation of Local Comprehensive Plan

1 of 34 Cities



MAINSTREET

Historic preservation and small business development

1 of 105 Cities



WATERFIRST

Environmental excellence and protective of water resources.

1 of 37 Cities



GICH

Helps communities create and launch a locally based plan to meet housing needs.

1 of 24 Cities



CITY OF ETHICS

Raising awareness and committed to ethical behavior at the local level.

1 of 247 Cities



STATE CERTIFIED POLICE DEPARTMENT

Police Department policies and procedures are conceptually sound and operationally effective.

1 of 142 Agencies
650 agencies in the state



CERTIFICATE OF ACHIEVEMENT FOR EXCELLENCE IN FINANCIAL REPORTING

20 times since 1996



County Partnerships



Harris Track Wastewater Treatment Plant



Multi-Train



South Langston Road Extension





Future City Hall

Old Houston County Courthouse purchased for repurposing into City of Perry Municipal Court, City Council Chamber, and related staff functions.



City Administrative Building

Proposed construction of a building located on Main Street. The facility would house Customer Service and other City functions and operations.



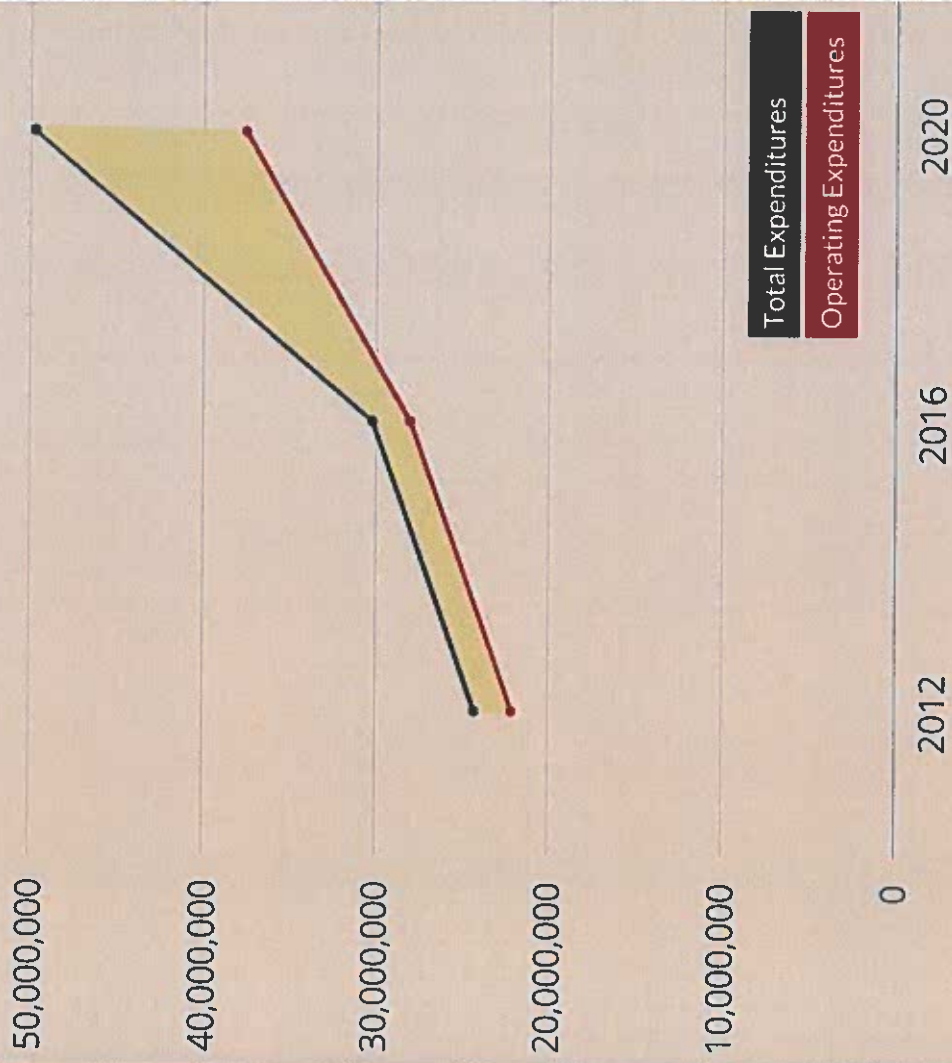
Total City Expenditures

105.14%

Total Expenditures

70.10%

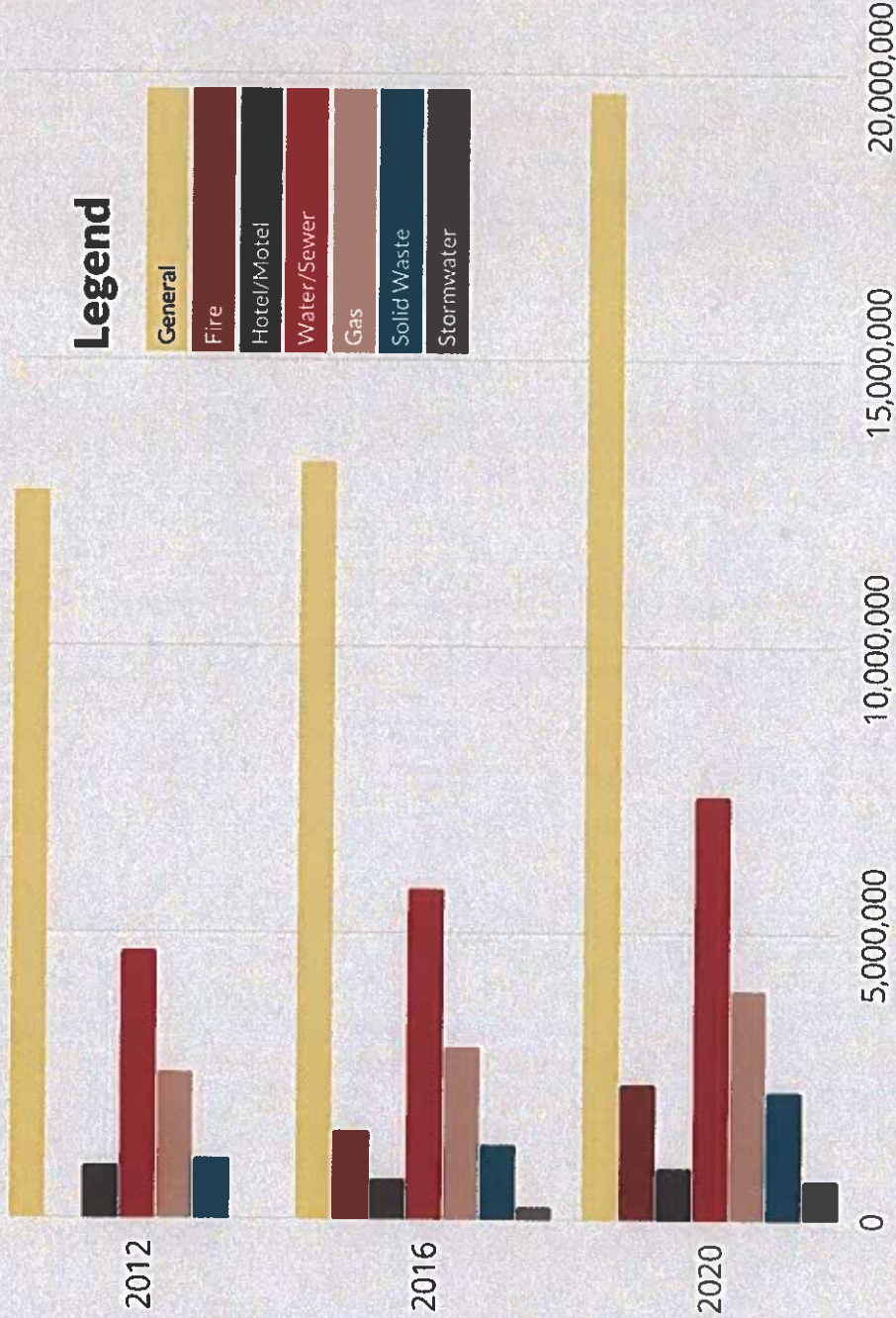
Operating Expenditures



Total Expenditures

Operating Expenditures

Expenditure Totals



**Increases from
2012-2020**

58.11%
GENERAL

17.05%
FIRE

(2.55%)
HOTEL/MOTEL

58.12%
WATER/SEWER

56.60%
GAS

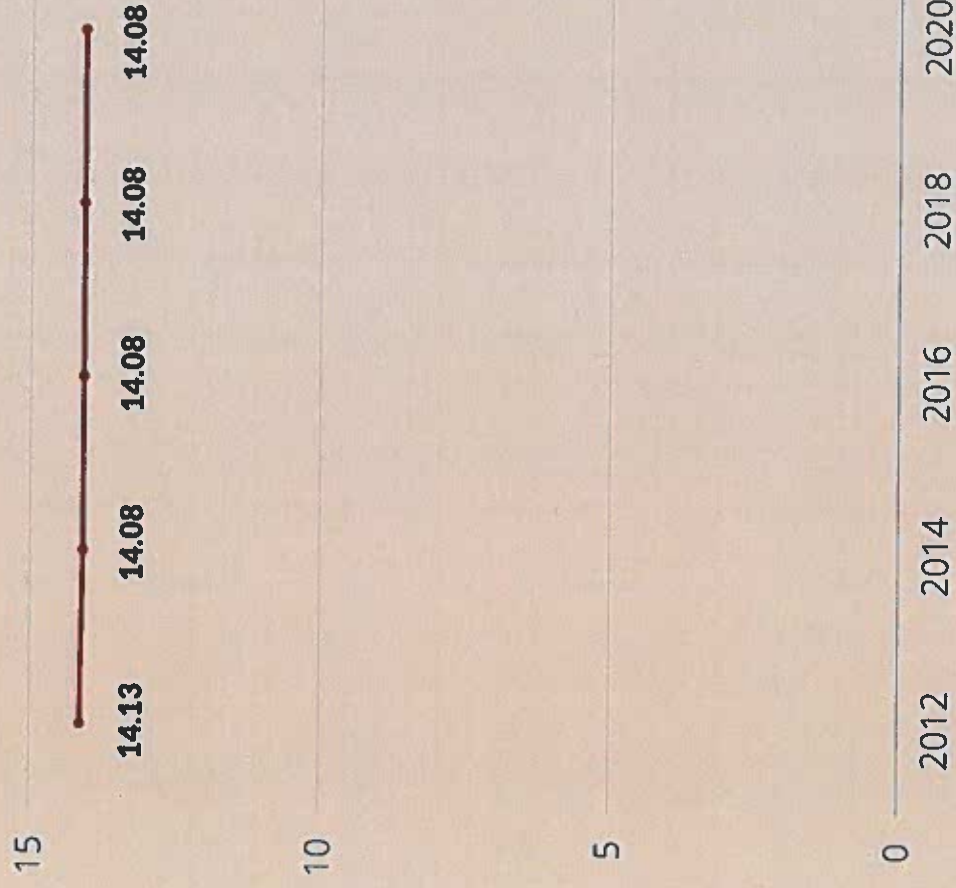
113.87%
SOLID WASTE

218.66%
STORMWATER

Millage Rate History

0.579%

decrease in the millage rate since 2012.



QUESTIONS?



Where Georgia comes together.



Where Georgia comes together.



Facility Security

Staff Recommendation for Security Vendor Selection

Table of Contents

Part 1:	—	Current Conditions
Part 2:	—	Needs and Goals
Part 3:	—	State Contract Vendors
Part 4:	—	Staff Recommendation

CURRENT CONDITIONS:

Hardware and Monitoring

Access Control: Rosslare

Video Surveillance: various

Intrusion: BTV

Fire Suppression: Georgia Fire Safety

WHY?

Failures to the system

- Loss of power to door controllers
- Locking people inside buildings
- Disabling locking doors without notice
- Multiple system resets required
- Secured facilities, such as records and evidence, experiencing loss of access control
- Access control, video surveillance, and intrusion are with multiple vendors across several platforms

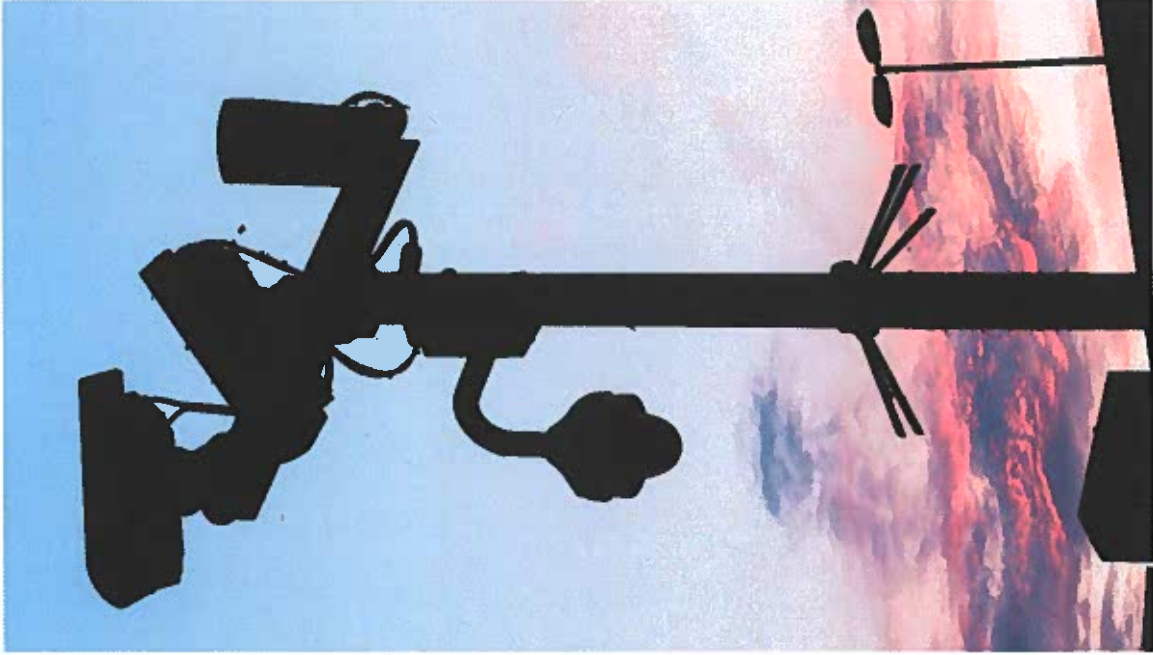
Communication between building systems:

- Addition/deletion of keycard access does not update to Public Safety Building

Communication with vendors

- Response times
- Access control: responsiveness of vendor, inability to repair recurring issues, current system is not a recommended application of hardware

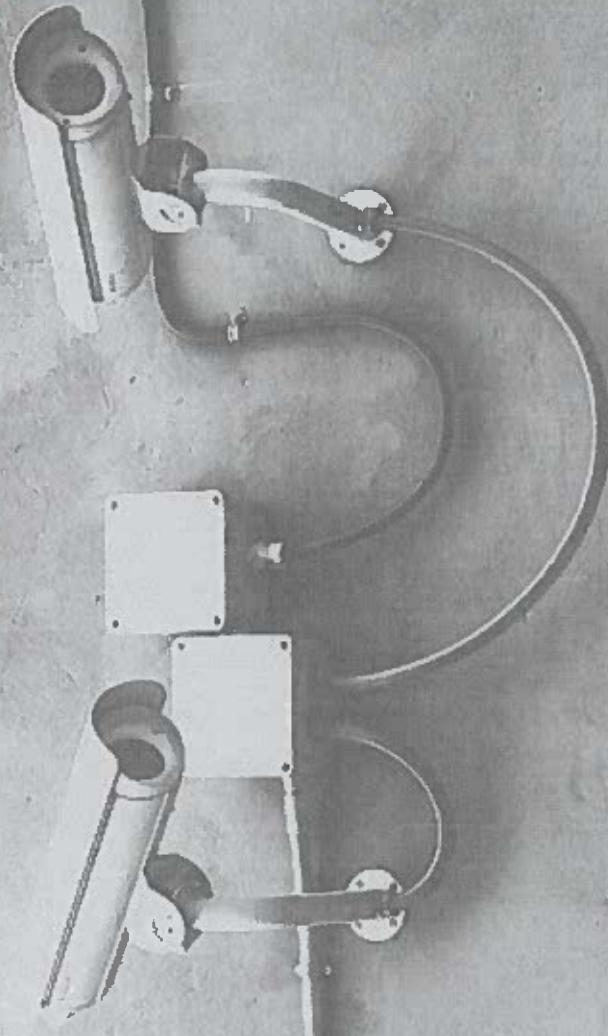




NEEDS AND GOALS

- **Utilize State Contract vendors in order to interview security vendors and choose a best fit**
- **Seek a vendor that can manage access control, video, and intrusion systems with one point of contact**
- **Ensure local support with expedient response times**
- **Streamline access control systems to avoid current failures**
- **Integrate camera and access control systems**
- **Provide controlled access to park restroom facilities**
- **Anticipate and prepare for future growth of facilities and user needs**

HOW DO WE GET THERE?



State Contract Vendors

Converjint Technologies
Macon, GA (Contract 99999-SPD0000172)

Adapt To Solve
LaGrange, GA (Contract SWC90807)

NetPlanner Systems, Inc.
Peachtree Corners, GA (Contract 98000-GTA)



NetPlanner
SYSTEMS, INC.
Your Pathway to Connectivity

Staff Recommendation

Convergint Technologies

- Local support (Macon), 24 hour maximum window
- Flexibility; utilization of some existing equipment
- Integrating access control and video surveillance
- Incorporating intrusion into access control and video monitoring
- Adaptable; local or cloud-based storage, ability to expand, supports various camera types/vendors
- Offer staff training of system operations and troubleshooting
- Not a product manufacturer

March 2015 - Security Proposal Matrix	Convergint	Adapt to Solve	Manufacturer
	Hardware		
Access Control Hardware	Galaxyair	Verkada	Verkada
Camera Hardware	integrate existing	Verkada	Verkada
Intrusion Hardware, panic buttons	integrate existing	panic buttons-Verkada	panic buttons-Verkada
		Access Control	
Door controller	varies, 5790-52659 each	\$1,129	\$1,129
Backup battery	included in price	\$117	\$117
Card Reader	included in price	\$212	\$212
		Intrusion (Burglar alarms)	
Panel, programming/monitoring	included		
		Camera	
Indoor	n/a, utilize existing	\$470 each	\$470 each
Outdoor	n/a, utilize existing	\$588 each	\$588 each
		Camera Storage	
Storage Capacity	As needed (typical 15-30 days)	30 days	30 days
		License	
Access Control	included in price, 3 years	3 years @ \$423 per card reader	3 years @ \$423 per card reader
Camera	n/a	3 years @ \$353 per camera	3 years @ \$353 per camera
		Software Renewal	
Beyond year 3: Access Control	\$4,734 a year, \$1 above		
		Installation	
Per technician	\$95 / hr	\$80 / hr	\$95 or \$65 / hr
		Service	
Per technician	\$95 / hr or per contract		
		Integration	
Compatible with phasing	X		
One point of contact	X		
Local support	X	X	independent contractors
		TOTALS	
Access control hardware	\$62,043.00	\$44,016.00	\$44,016.25
Security camera hardware		\$53,926.38	\$53,926.38
Access control installation	\$95 / hr	\$90,123.00	\$93,873.68
Security camera installation		\$45,923.72	\$52,480.64
Security integration (Convergint)	\$10,843.00	\$193,989.10	\$204,746.95
Notes	includes multi-touch cards, bluetooth credentials, replacement cards, burglar alarm panels	Does not include Public Works or Animal Control	Does not include Public Works or Animal Control

Gallagher Access & Intrusion

MSRP Pricing by Location

Location	Intrusion + Enclosure + 1 Keypad Mobile + 3 Readers, SMA	Software, Professional, Year 1 & Beyond
Arts Center - 3 doors	\$3,504	\$0
City Hall - 11 doors	\$8,686	\$1,84
DeWitt Farm Station - 2 doors	\$2,569	\$0
Fire HQ - 3 doors	\$4,674	\$350
Police HQ - 8 total doors	\$8,708	\$1,040
Worrell Center - 5 doors	\$6,489	\$650
Calhoun Park - 2 doors	\$3,349	\$260
Credlewood Park - 6 doors	\$7,328	\$760
Rozar Park - 4 doors	\$5,364	\$520
Public Works - 1 door	\$1,659	\$130
Animal Control - 2 doors	\$3,349	\$260
PEBS - 4 doors	\$5,364	\$520
TOTAL COST	\$62,043	\$4,734 / year

System Included Components:

SOFTWARE + MOBILITY

- Enterprise Software - expandable to unlimited doors
- Workstation - 1 concurrent use license, additional can be added
- Mobile Client - 1 license, additional can be added

READERS + CREDENTIALS

- Multi Tech - Card + Bluetooth Enabled (T11 or T15)
- Bluetooth Credentials
- Mifare Desfire EV2 Pre Encoded Cards

HARDWARE

- Cabinets/Enclosures - Reader & Lock Power
 - Controllers with additional Inputs/Outputs
 - Intrusion/Burglar with IP Transmission
- Requires host or server for software license.
Accessories including ceiling lock hardware, door magnets, outdoor readers & cabling.

For more information contact:

Convergint
TECHNOLOGIES

Executive Director
877-646-6239
director_intrusion@convergint.com



Gallagher at a glance

Who we are

- Global security leader**
 - Member of the
 - 100 largest
 - 100 most innovative
 - 100 fastest growing
- Physically secured emergency response**
 - Over 1000 offices
 - Over 1000 employees
 - Over 1000 locations
 - Over 1000 products
 - Over 1000 services
- Leveraged to protect properties across all major industries**
 - Over 700,000 doors
 - Over 20,000 access points
 - Over 100,000 employees
 - Over 100,000 visitors

What we do

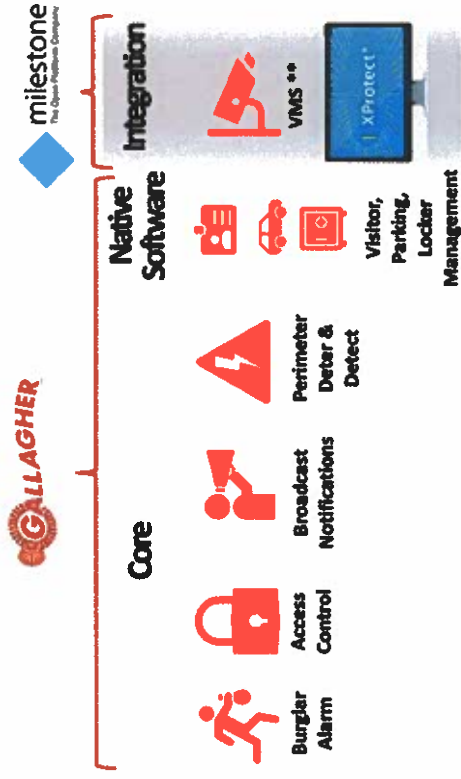
- One platform manages all security needs**
 - Access control
 - Visitor management
 - Time & attendance
 - Mobile access
 - Mobile app
 - Mobile app
 - Mobile app
 - Mobile app
 - Mobile app
 - Mobile app
- High level integrations**
 - Over 100 integrations
 - Over 100 integrations
 - Over 100 integrations
 - Over 100 integrations
 - Over 100 integrations
 - Over 100 integrations
 - Over 100 integrations
 - Over 100 integrations
 - Over 100 integrations
 - Over 100 integrations
- Strong cyber security focus**
 - 200+ security certifications
 - 200+ security certifications
 - 200+ security certifications
 - 200+ security certifications
 - 200+ security certifications
 - 200+ security certifications
 - 200+ security certifications
 - 200+ security certifications
 - 200+ security certifications
 - 200+ security certifications
- Flexible and scalable**
 - Over 100 integrations
 - Over 100 integrations
 - Over 100 integrations
 - Over 100 integrations
 - Over 100 integrations
 - Over 100 integrations
 - Over 100 integrations
 - Over 100 integrations
 - Over 100 integrations
 - Over 100 integrations

Our commitment to our customers

- Involved in ISO**
 - 100% of products
 - 100% of services
 - 100% of support
 - 100% of training
 - 100% of development
- 24/7 technical support**
 - Free phone support
 - Free email support
 - Free chat support
 - Free on-site support
 - Free on-site support
- Full control of the manufacturing process**
 - End-to-end control
 - End-to-end control
 - End-to-end control
 - End-to-end control
 - End-to-end control
 - End-to-end control
 - End-to-end control
 - End-to-end control
 - End-to-end control
 - End-to-end control
- Unlimited warranty**
 - 3 Year warranty
 - 3 Year warranty
 - 3 Year warranty
 - 3 Year warranty
 - 3 Year warranty
 - 3 Year warranty
 - 3 Year warranty
 - 3 Year warranty
 - 3 Year warranty
 - 3 Year warranty

- Will replace current system, keycards, and card readers
- Sync with camera installations with Milestone platform
- Can remotely lock/unlock facility or doors
- Panic mode can lock down a building, only allowing Emergency Services access
- Can upload access credentials to smartphone for access
- Integrate motion sensors to access control and coordinate custom responses for emergency response or mobile alerts
- Local Gallagher representatives are stationed in Marietta, Athens, and Canton, GA

How will this work?



Controllers

- Brains of the system
- Store system information to operate if disconnected from server



Modules

- Monitor inputs
 - Motion sensors
 - Door contacts
- Control outputs
 - Door locks
 - Sirens



Card Readers

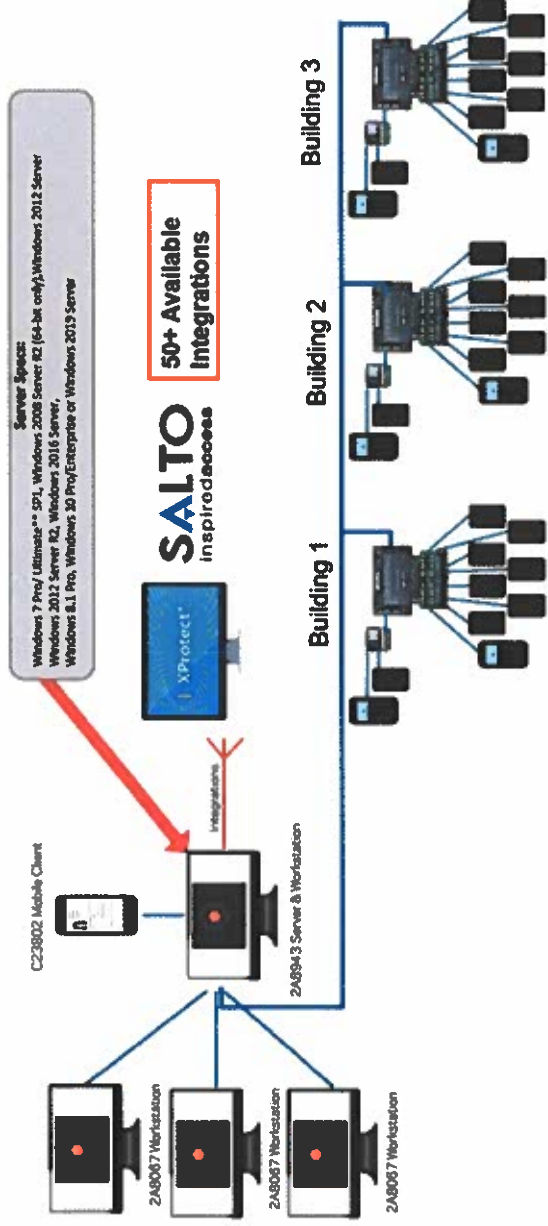
- Capture Badge Reads
- Can support existing cards
- BlueTooth Credential Support
- Can be used to arm/disarm intrusion zones



Hardware Cabinet

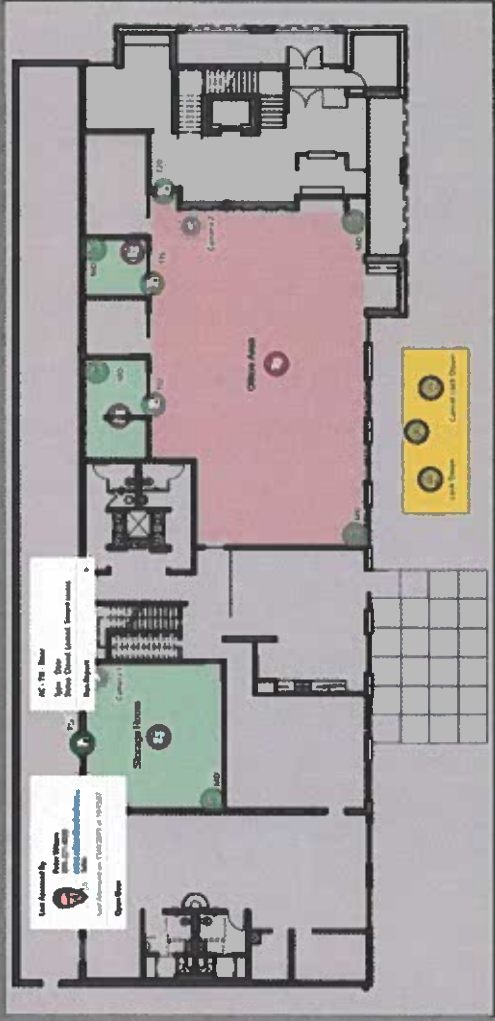
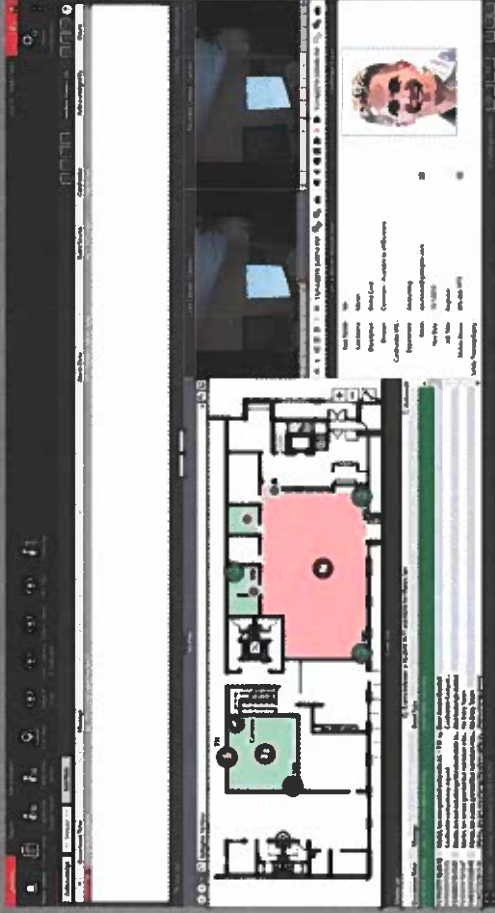
- Centrally located, mounted at standing height
- Cabinet can house between 2-20 doors per enclosure
- Critical infrastructure is not installed above ceiling or out of reach





- City would own and maintain a physical server or virtual server on-property or on-network
- City house and own all records, data, and software on premises for protection from outside browser based attacks on outside local network
- This architecture provides more robust connections and integrations to 3rd party systems
- Video management, Wireless Locks, Biometrics, Active Directory, etc.
- Designed and relied on for long term use/ownership and are not "rentals"
- Generally a non-mandatory annual commitment with uninterrupted performance/functionality

Monitoring software and mobile app



Mobile App

- Supported on Android and iPhone
- Remote monitoring of status for zones, alarms, and doors
- Lockdown individual zones remotely
- Event notifications via SMS or email
- Scheduled email generated reports for specified parameters
- Through Bluetooth, provide two-factor authentication (pin or fingerprint) mobile security access
- Allows broadcast notifications with critical instructions to multiple card holders with one simple step in the event of an emergency or lockdown



References

Gallagher - Federal

- US Army
- Department of Defense
- US Equal Employment Opportunity Commission
- Department of Homeland Security
- Department of Energy
- Department of Transportation
- Department of the Interior
- Homeland Security
- Office of the Inspector General
- US Customs and Border Protection
- US Citizenship and Immigration Services



Gallagher and Milestone - non-municipality

- R+L Carriers
- Kureg Dr. Pepper
- Boars Head

Convergint and Gallagher

- RAFB - Macon

Convergint, Gallagher, and Milestone

- Beaufort-Jasper Water Authority, Beaufort, SC

Gallagher - municipality

- City of Jackson, Wyoming
- City of Sturgis, South Dakota
- City of Riverside, Missouri
- Becker County, Minnesota

Gallagher and Milestone - municipality

- City of Arlington, Texas
- Sioux Falls, South Dakota
- Yankton County, South Dakota



What is the next step?

With Council's concurrence to proceed with Convergent:

- Establish a sole-source partnership with Convergent Technologies utilizing the State Contract
- Develop a Phase I installation based on facility priorities
 - Replacing all current access control: card readers, keycards, and main panels
 - Add controlled access to park restroom facilities: Rozar, Creekwood, and Calhoun
- Develop an on-going maintenance and monitoring contract with Convergent based on City need
 - Routine service, completing needed and preventative maintenance tasks on a schedule
 - Hourly technician rates, as needed

Perry Leisure Services Proposal: Ice Vending Machines



Where Georgia comes together.



Objectives:

- Provide an additional amenity to our destination parks.
- Create an additional source of revenue

Considerations:

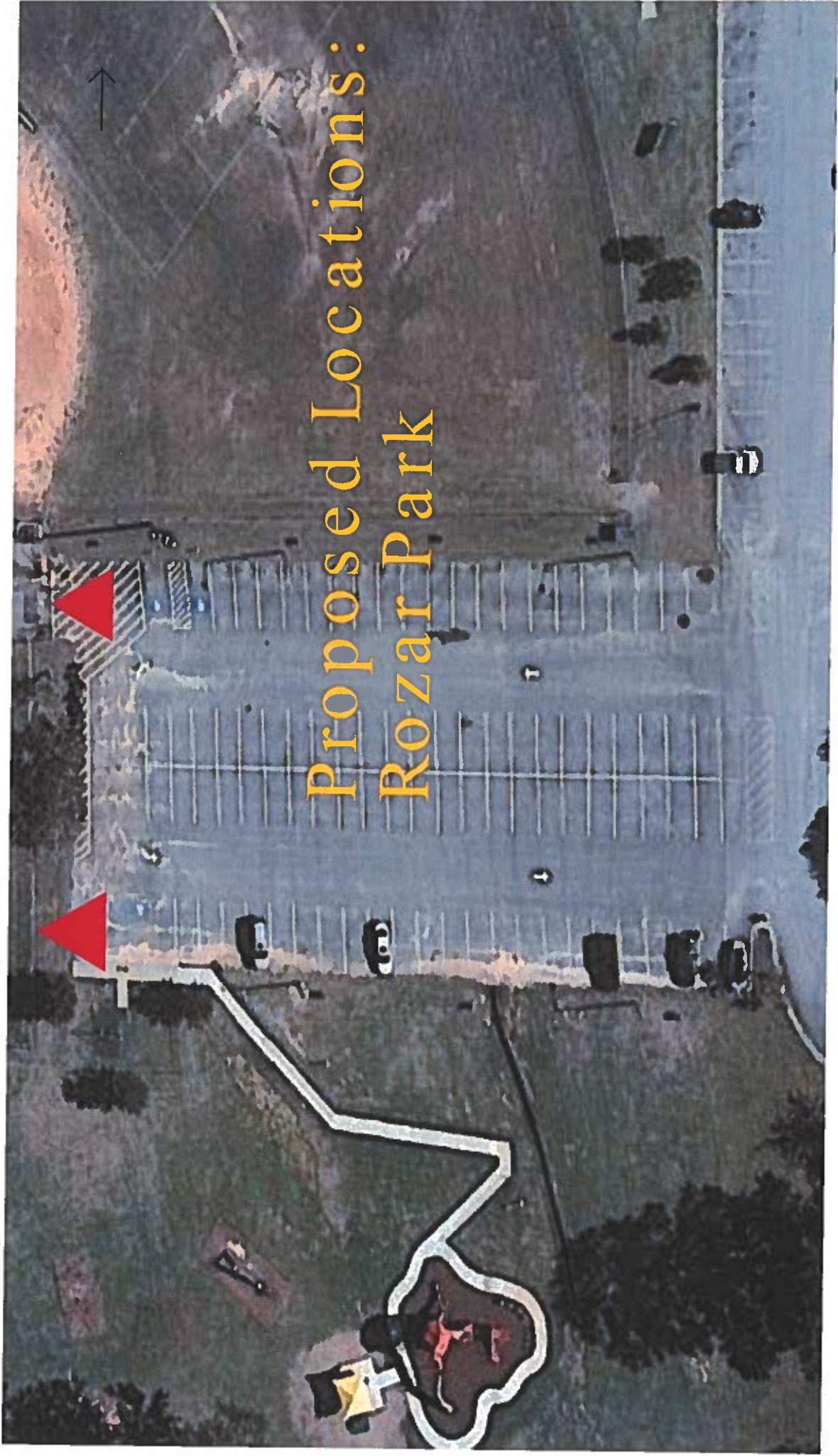
- Prepare an RFP
- Lease Agreement

City of Perry's Proposed Responsibilities

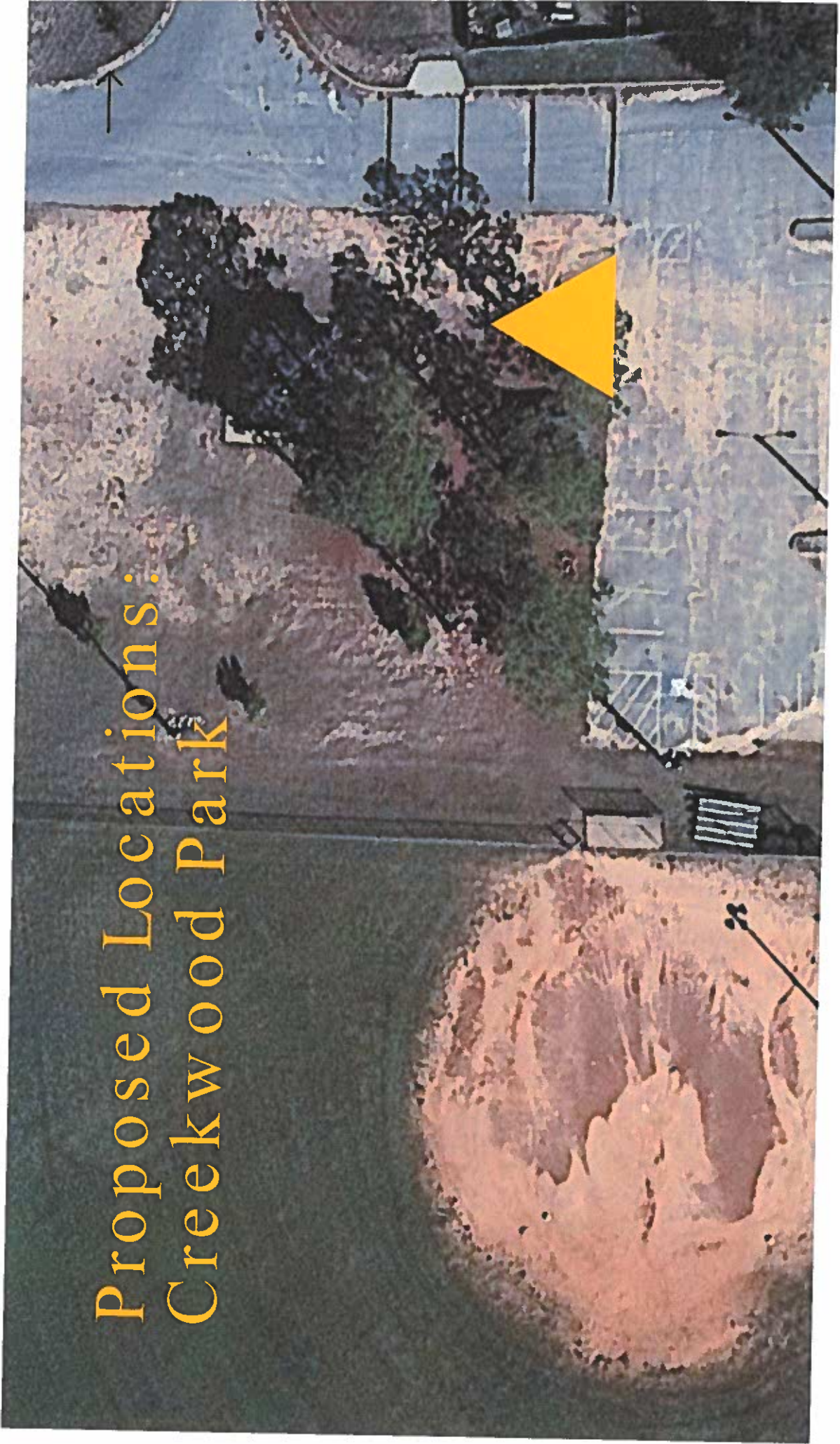
- Provide location
- Provide utilities



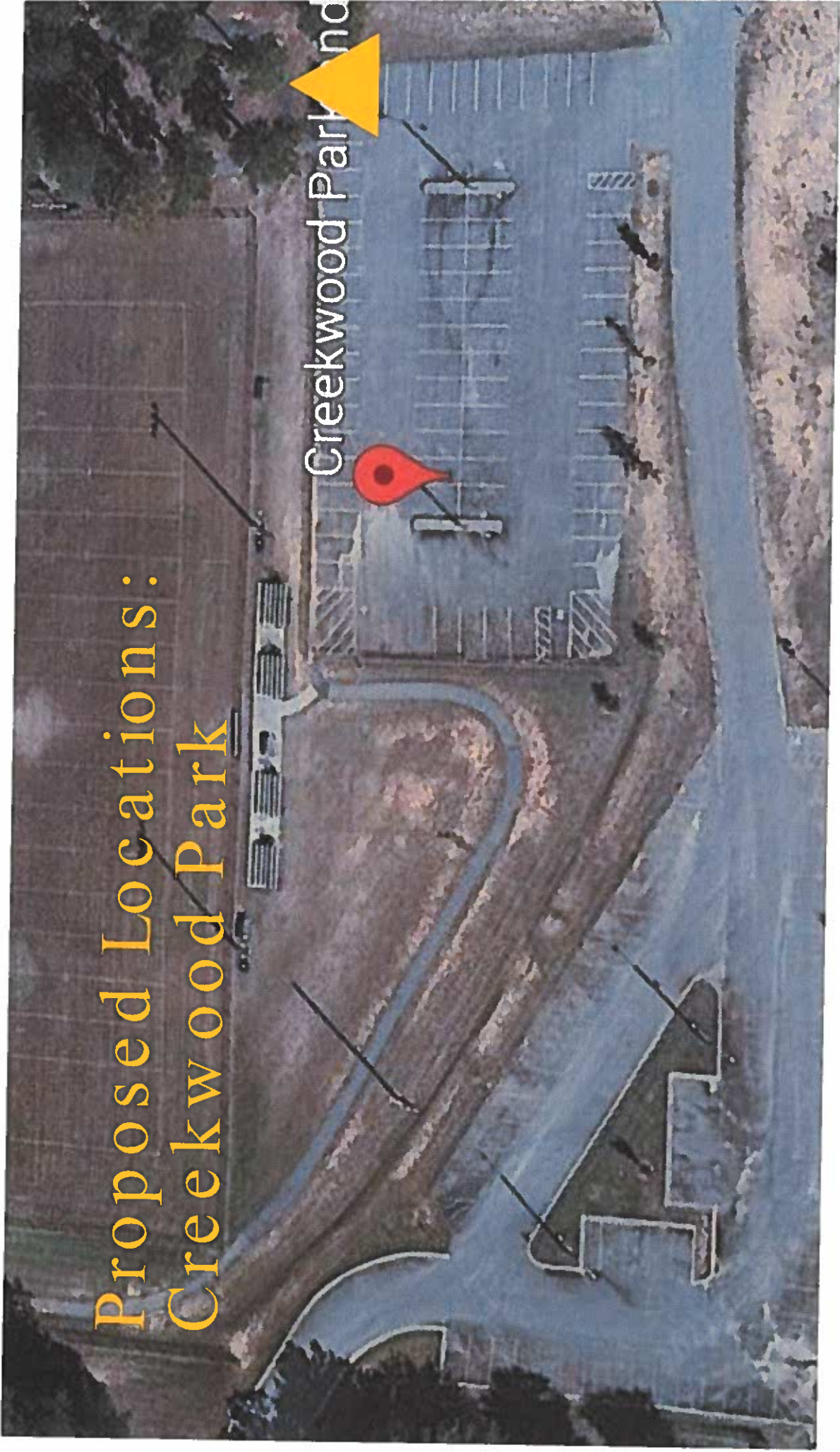
Proposed Locations: Rozar Park



Proposed Locations: Creekwood Park



Proposed Locations: Creekwood Park



Creekwood Park



Where Georgia comes together.

OFFICE OF THE CITY MANAGER

MEMORANDUM

TO: Mayor / Council
FROM: Lee Gilmour, ^{LS} City Manager
DATE: March 30, 2021
SUBJECT: Neighborhood parks

With the City's rapid expansion and the increasing demand for nearby park space, the Administration recommends Mayor/Council establish a process for acquiring neighborhood park space. These pocket parks would be green spaces with minimum amenities as provided in Council's classification and guidelines for the City's green spaces. Items would include small playground equipment, picnic tables, etc.

The recommended process would be approximately an acre size pocket park for every 250 single family detached houses. This would not be a requirement for developers to provide space but a partnership between the City and developers with the City purchasing the site. The Community Development Department would monitor the process. The parks would be located to foster walking to the sites.

cc: Mr. R. Smith
Mr. B. Wood



Where Georgia comes together.

Office of the Assistant City Manager

To: Lee Gilmour, City Manager
From: Robert Smith, Assistant City Manager
CC: Chad McMurrian, City Engineer
Ansley Fitzner, Public Works Superintendent
Travis Falcione, ESG
Date: March 11, 2021
Re: Infrastructure Assessment

Following up on your request to complete an infrastructure assessment looking at the preparedness of City utility infrastructure for extreme weather / temperature events:

- City utility infrastructure is well-positioned to endure extreme weather / temperature events:
 - Utility lines must be buried at a depth of at least four (4) feet. At this depth, the infrastructure nor product it is conveying should be adversely impacted by extreme cold or heat.
 - Most of our critical infrastructure is protected from power loss by backup generators.
- Our primary vulnerabilities are external in nature and we as a City are “at the mercy” of our partner providers and their ability to provide resources during extreme events:
 - Natural gas supplied by external sources. If natural gas supply and or delivery is curtailed or stopped, there is little if anything the City could do in response.
 - Electric power is supplied by external sources and delivered via private infrastructure. Unlike natural gas, the City could ensure appropriate fail safe (generators; disaster continuity contracts) measures are in place at critical facilities to mitigate the impact of sustained power loss.
- The City could ensure the continued provision of water and sewer services with continued power. Fortunately, the City has made extensive investments in ensuring backup generators are in place at critical infrastructure locations. However, there are two (2) critical facilities that do not currently have backup power supplies in place:
 - Well #3 (on Hwy. 341 adjacent to Heritage Oaks Park; serves Water Plant 2)
 - Tucker Road Water Treatment FacilityIn order to ensure operational continuity, it is recommended the City explore deploying backup generators at both above-referenced facilities.

Please let me know if you have any questions or require any additional information at this time.